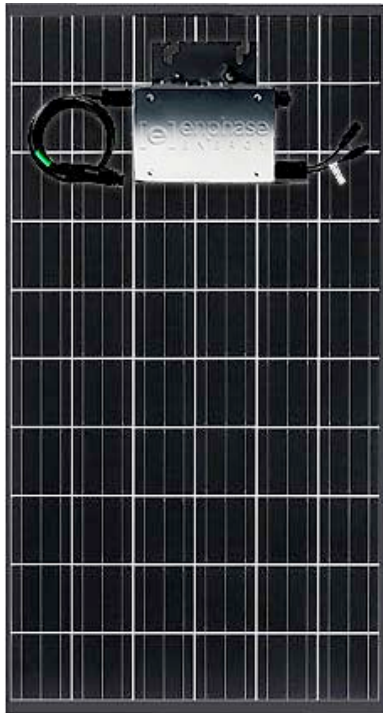


## WSS Kyocera Enphase Grid-tie Systems

*2,115 Watts of Power*



*Maximize your power output with the Kyocera Enphase Gridtie System. American-made 235-watt Kyocera Solar panels are paired with Enphase Microinverters for a high output, innovative system.*

*In a traditional system, solar panels are strung in series, and you are limited by the lowest performing solar panel. With the Kyocera Enphase Grid-tie System, each solar panel can operate independently because it has its own Enphase Microinverter. Take a look at the list of components included in this system and give us a call. Please note roof racking is sold separately.*

### Pieces of equipment that make up this system:

- 9 Kyocera KD235GX-LPB 235 watt American Made solar module,
- 9 Enphase M190 - Micro Inverter 240 VAC for **MC4**
- 1 Enphase Install Kit; AC Branch Circuit

System Number: 8923509

At Wholesale Solar we have assembled hundreds of complete solar electric systems. Call us today to discuss your new renewable energy system!

Wholesale Solar, Inc.  
412 N. Mount Shasta Blvd  
Mount Shasta CA 96067  
Toll Free 800-472-1142  
Fax 530-926-1162  
www.wholesalesolar.com

This system qualifies for a Federal Tax Credit of 30% of the installed cost!



## Kyocera Panels are competitive high-quality modules

Whether you're comparing price or quality, Kyocera Solar is one of the most competitive manufacturers of PV modules in the world. That's because their vertically integrated structure provides unsurpassed quality control. Having been in business longer than their warranties, Kyocera guarantees their solar panels based on firsthand experience.



## How does the Enphase Microinverter Work?

The Enphase Energy Microinverter maximizes energy produced from a photovoltaic (PV) array. Each Enphase Energy Microinverter is independently coupled to one solar module in an array. This configuration means that an individual Maximum Peak Power Point Tracker (MPPT) operates each solar module. This insures that the greatest power available from each solar panel is sent to the grid regardless of the performance of the other PV panels in the array. Regardless of shading, soiling, orientation which would, affect individual solar panels in the array, or module mismatch, the Enphase Energy Microinverter ensures peak performance for its coupled PV panel.



Wholesale Solar, Inc.  
412 N. Mount Shasta Blvd  
Mount Shasta CA 96067  
Toll Free 800-472-1142  
Fax 530-926-1162  
[www.wholesalesolar.com](http://www.wholesalesolar.com)