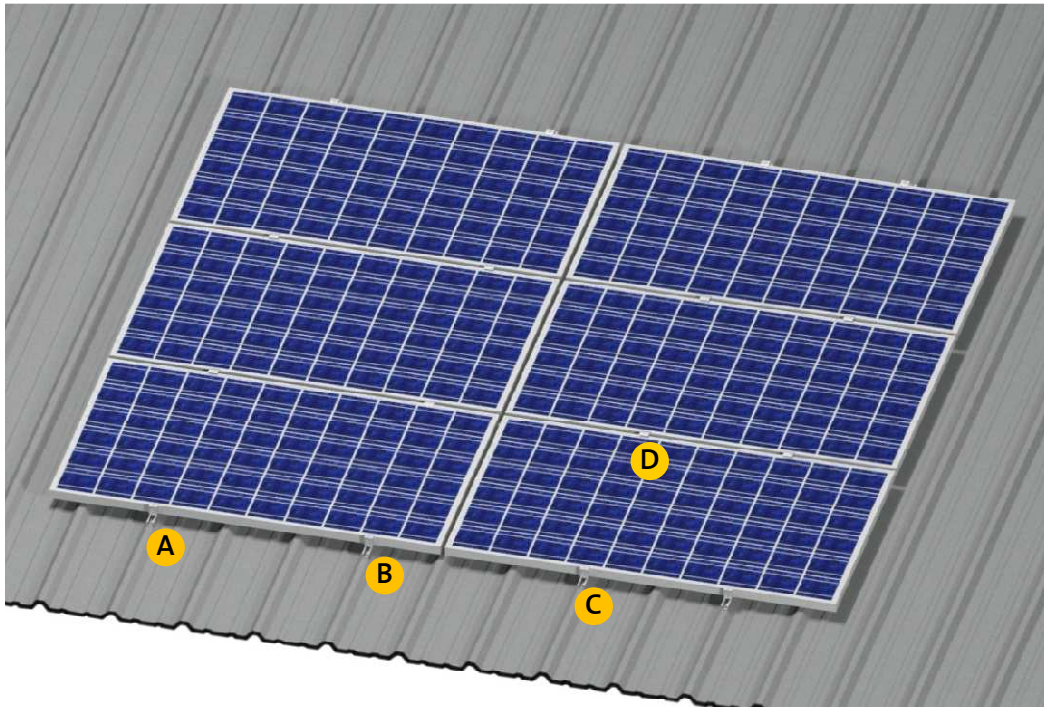
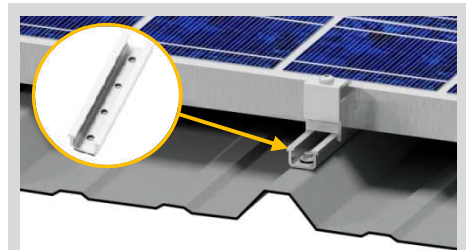
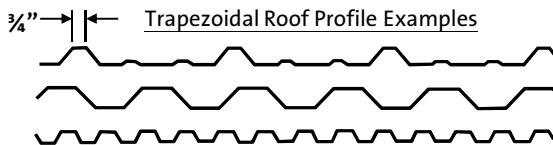


FEATURES

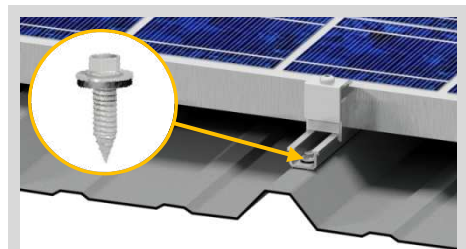


The Renusol MS system provides a simple, compact, and cost-effective solution for mounting PV modules to steel trapezoidal sheet metal roofs.

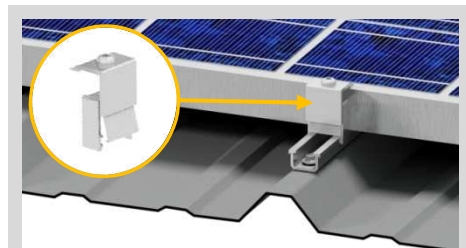
- Fastens directly to sheet metal thereby eliminating the need for long rails and attachments to purlins or rafters.
- EPDM gaskets pre-assembled under all clamp bases and fasteners for double protection from leaks and third-party waterproof tested for assurance.
- One-size end and mid clamps fit all commonly used modules to simplify inventory .
- Pre-assembled clamps allow for quick installation.
- Self-piercing / self-tapping screws with hardened tips to eliminate drilling.
- All stainless steel and aluminum construction ensures reliability and longevity.
- ICC and UL approvals allow for fast permitting.
- Compact packaging to reduce shipping costs; a shoebox holds a 5kW system.
- Compatible with all widely used steel sheet metal roofs 26-gauge or thicker with flat trapezoidal peaks at least $\frac{3}{4}$ " in width.



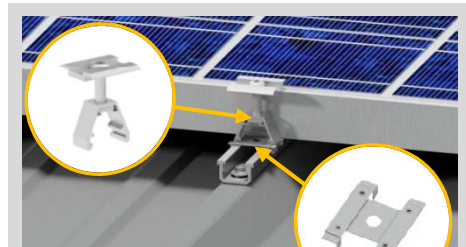
- A Clamp Base**
- Attaches directly to sheet metal only
 - Self-sealing EPDM gasket



- B Screws**
- Self-piercing / self-tapping threads
 - Self-sealing EPDM bonded washer
 - ICC tested & approved for application



- C End Clamp**
- Clamp range: 30 to 50mm
 - Fits 97% of all modules



- D Mid Clamp**
- Clamp range: 30 to 50mm
 - WEEB-CCR provides continuous module to module grounding
 - UL467 tested and approved

About Renusol

Renusol America is a leading innovator in flat-roof and pitch-roofed mounting systems for PV modules in the US solar industry. Renusol America provides sales, service, and customer support from its headquarters in Atlanta, Georgia and through a network of authorized distributor partners across the country. The company is part of the Centrosolar Group, a publicly traded company on the German stock exchange, and is a wholly owned subsidiary of Renusol GmbH, a market leader in Europe with close to 1GW of solar power mounted on Renusol systems.